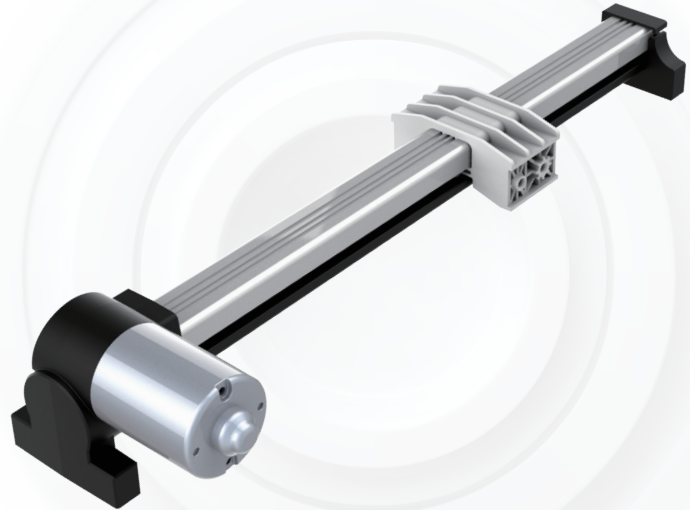


JLDQ.18

SINGLE DRIVE



Specifications:

Appearance	Black (PA), Silver (Aluminum)
Input Voltage	29V DC
Max load capacity	3000N (Push) / 2000N (Pull)
Stroke	20 - 500mm
Min install size	≥ Stroke + 115mm
Duty cycle	1 min on / 8 min off
No-load speed	Up to 52mm/s, depending on the version
Ambient temperature	From +10°C to +40°C
Certifications	UL, FCC, CE, RoHS

Dimensions:

